



DESIGN AWARD

HOUSING

Northshore StraitsView

Project Overview

Inspired by Chinese paintings, Northshore StraitsView emulates a backdrop of undulating mountains embracing an urban oasis fronting the sea. Residential blocks are stepped-back from the seafront promenade and carefully angled to optimise views for the units. Roof gardens atop the stepped blocks and a central sky terrace frame the breath-taking panorama for all to savour.

Enveloped within the project is a central space for the community to gather and bond. The design also uses the terrain to its advantage, by layering environmental decks over a central integrated/basement car park. A second storey elevated pedestrian network provides seamless access to all public amenities across the precinct and beyond.

From art to architecture – Contextualising a new living



INSPIRATION - CHINESE PAINTING



ASPIRATION - URBAN OASIS



INTENTION - BRING IN THE "SEA" AND "BEACH"

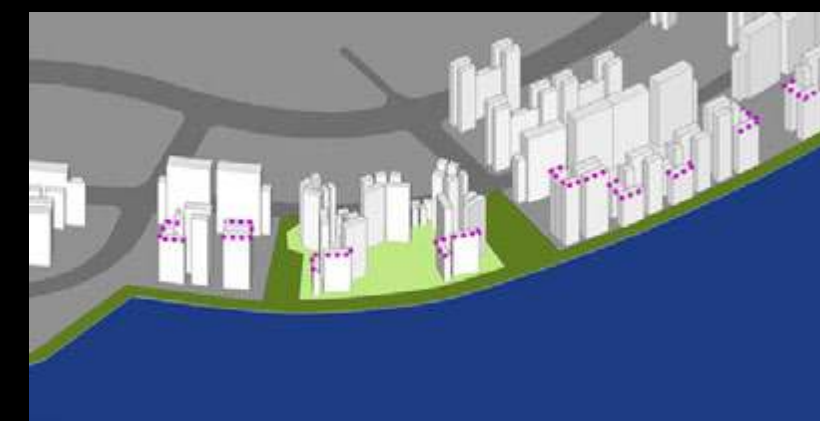


CREATION - SEMI PRIVATE ENCLOSURE

Urban response to site conditions and opportunities



URBAN PROFILE:
ESTABLISHING AN URBAN DATUM TO RELATE TO THE STREET



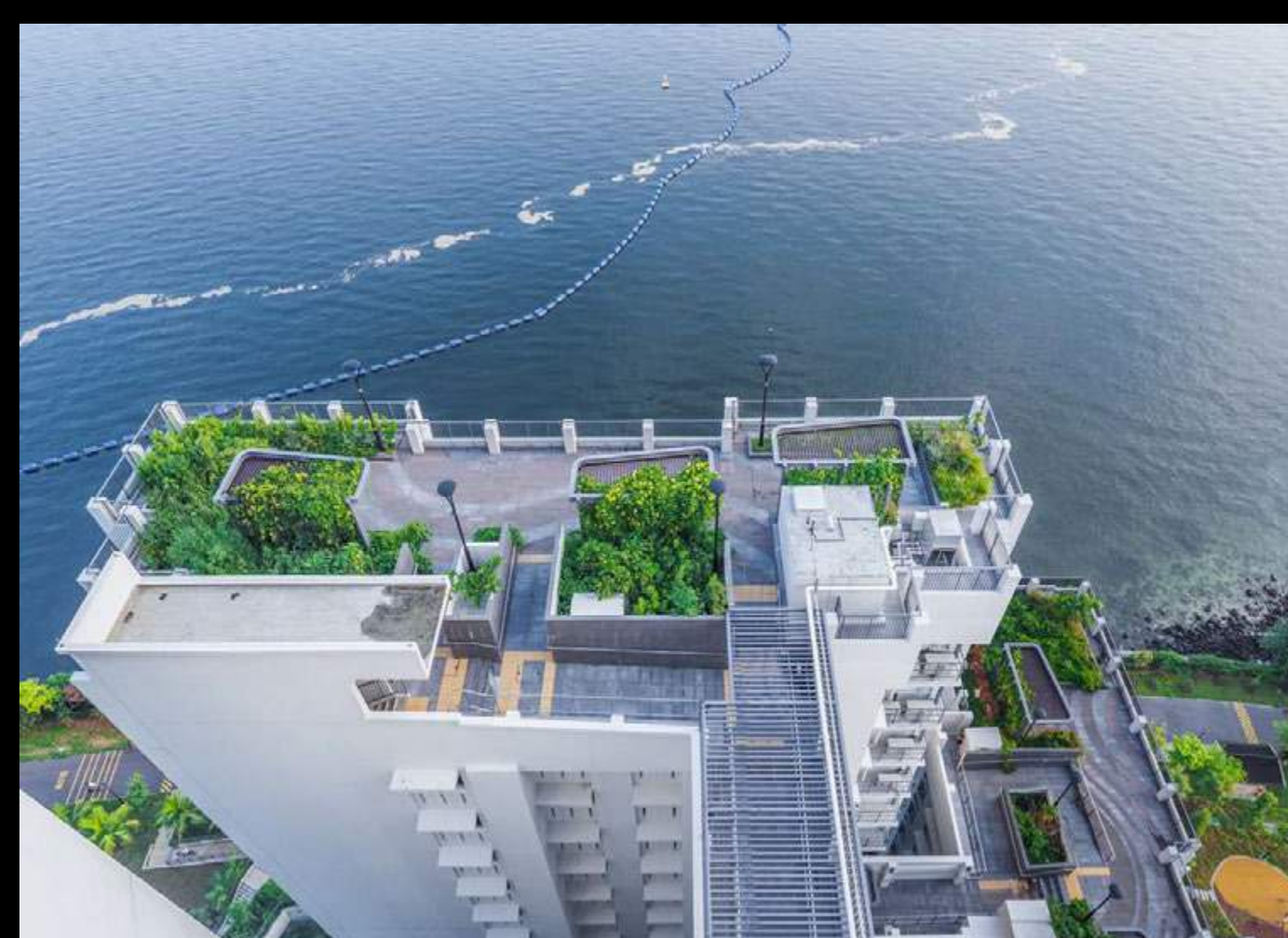
URBAN SCALE:
SCALE DOWN TO RELATE TO THE WATER FRONT



ROLLING SKYLINE:
A VARIEGATED SKYLINE ALONG STREET



SEAMLESS GREENERY:
INTERGRATING CENTRAL GREEN SPINE



Panoramic view from roof garden



Site layout



Seamless linkway and drop-off porch



Terraced roof garden



Elevated pedestrian network



Unique trellis at e-deck



Integrated precinct pavilion



Community living room